

# UATP One Merchant Services

ACH Conference  
May 16, 2023

**UATPONE**  
Merchant Services

- Evolution of UATP One

- BSP Credit Primary Features/Benefits

- BSP and ARC Process Flows

- BSP and ARC Checklist

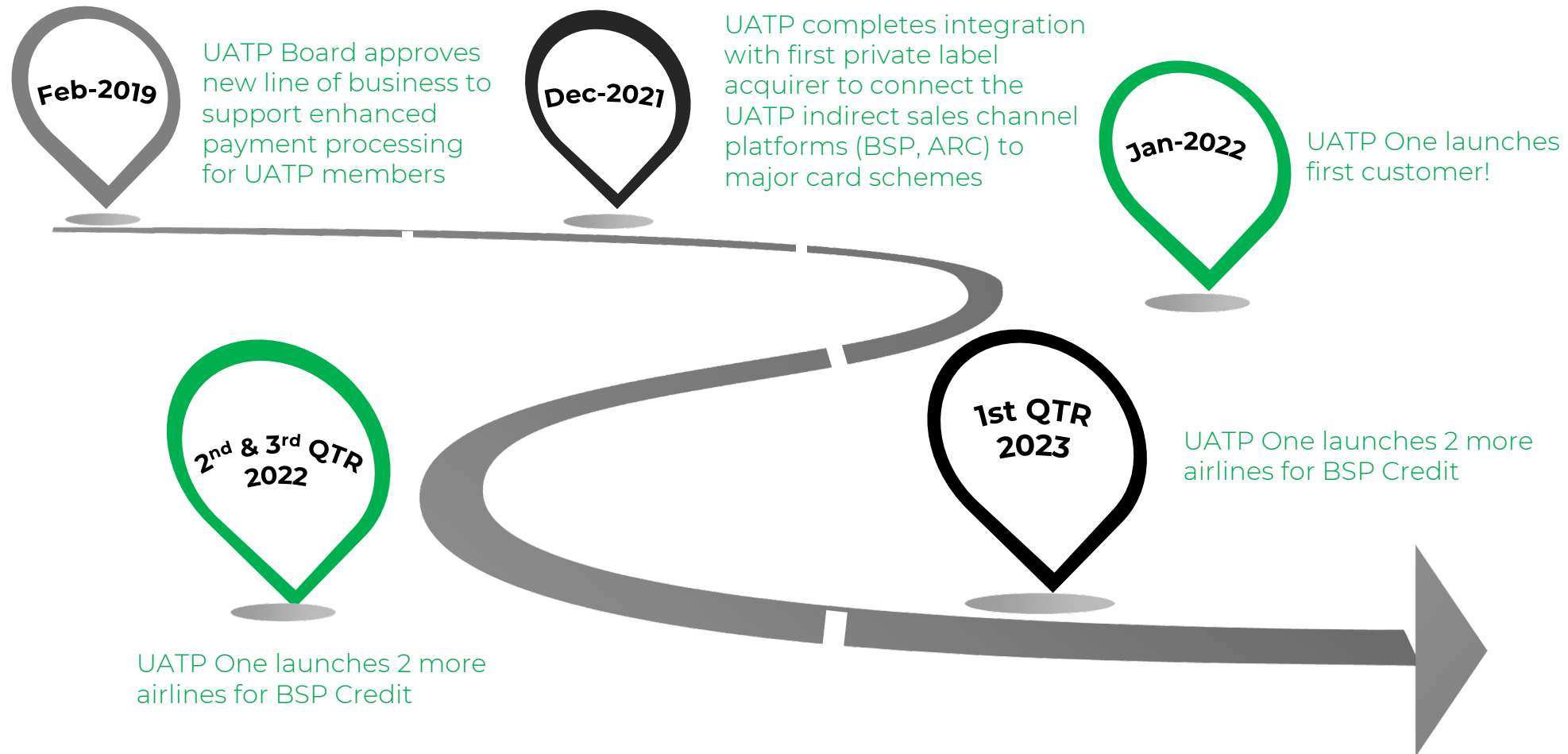
- cPanel Dashboard Reporting

- UATP One Team

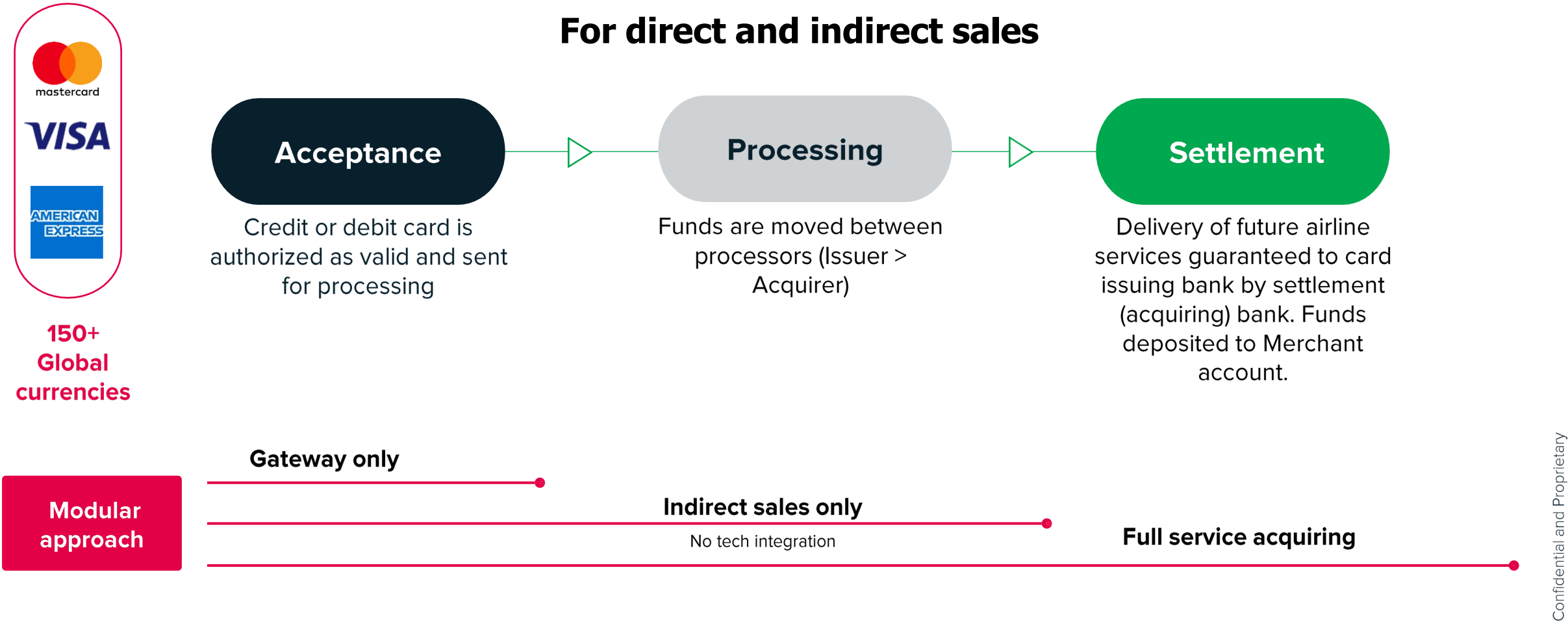


## Agenda

# Evolution of UATP One Merchant Services



# Bringing enhanced payment services to airlines reduces cost, complexity, and risk



# BSP Credit



- ✓ UATP One is connected to all 152 BSP markets
- ✓ Currently support Visa and MC with additional card types on the roadmap
- ✓ No integration required
- ✓ IATA will send authorization file to UATP's PCIDSS compliant server (Amazon Web Services)
- ✓ UATP's platform will monitor any potential transaction issue and work to resolve prior to sending to our Acquirer partner's gateway
- ✓ Authorization, settlement and billing details will be visible in cPanel dashboard
- ✓ Chargebacks and retrievals all managed in cPanel dashboard

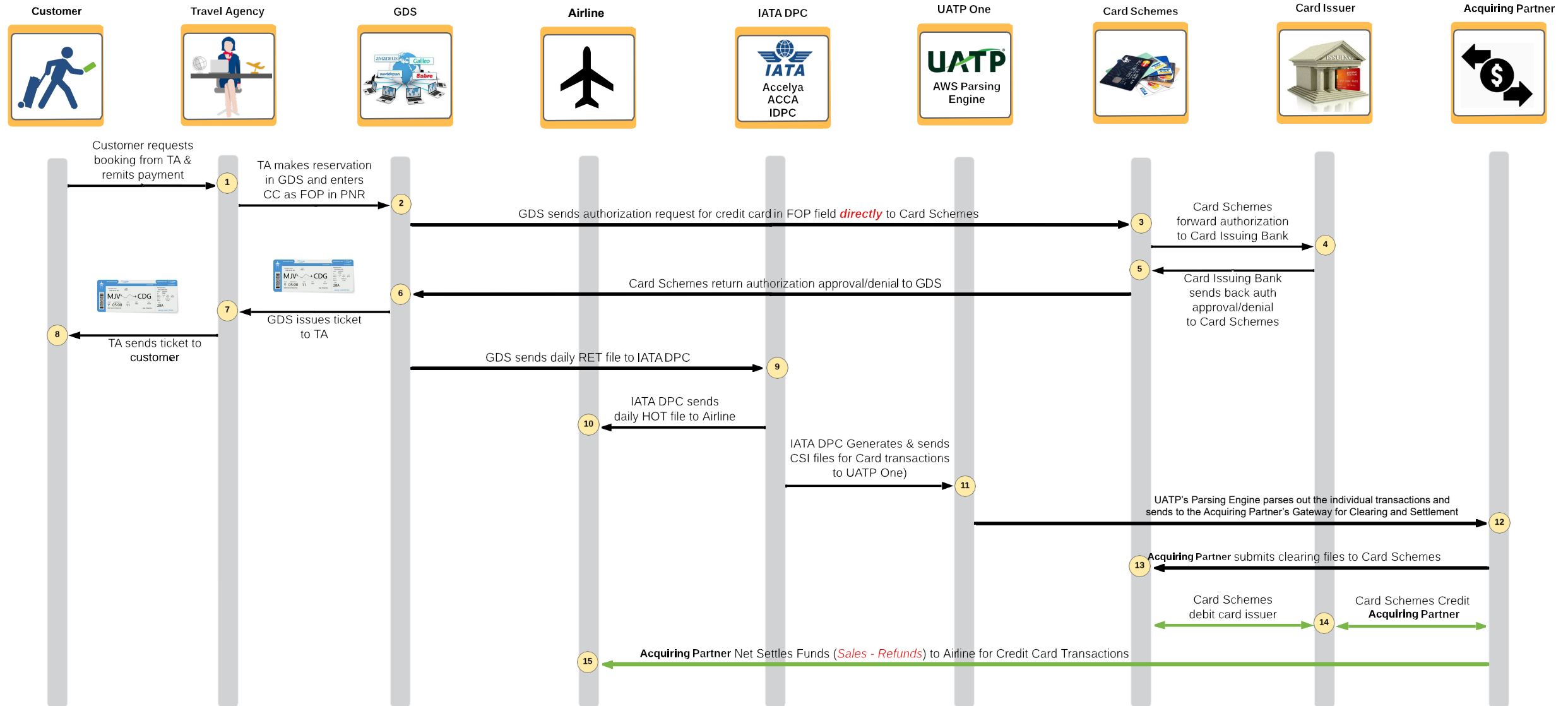
# BSP Credit



- ✓ Completing IATA LCCB form to redirect settlement files to ATCAN (non-UATP). IATA set up time 3 – 4 days.
- ✓ Total set up time 2 – 3 weeks upon completion of signed executed merchant services agreement.

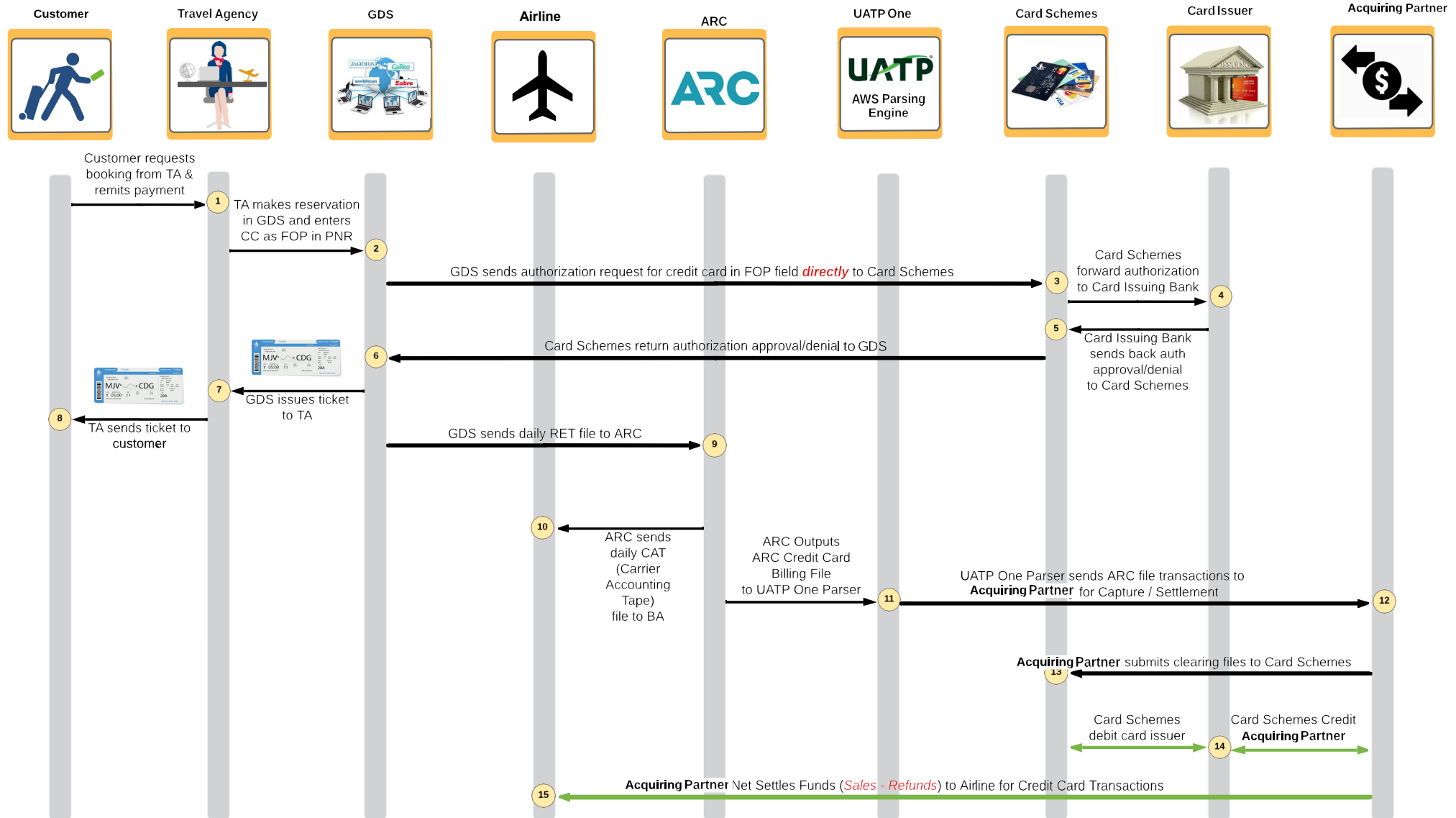
*Note:* ARC Credit connectivity to be completed and in production with a projected date of June 2023.

## UATP One / Nuvei - BSP Credit Card Processing Flow





# UATP One / Nuvei - ARC Credit Card Flow





# UATP One BSP Activation Checklist

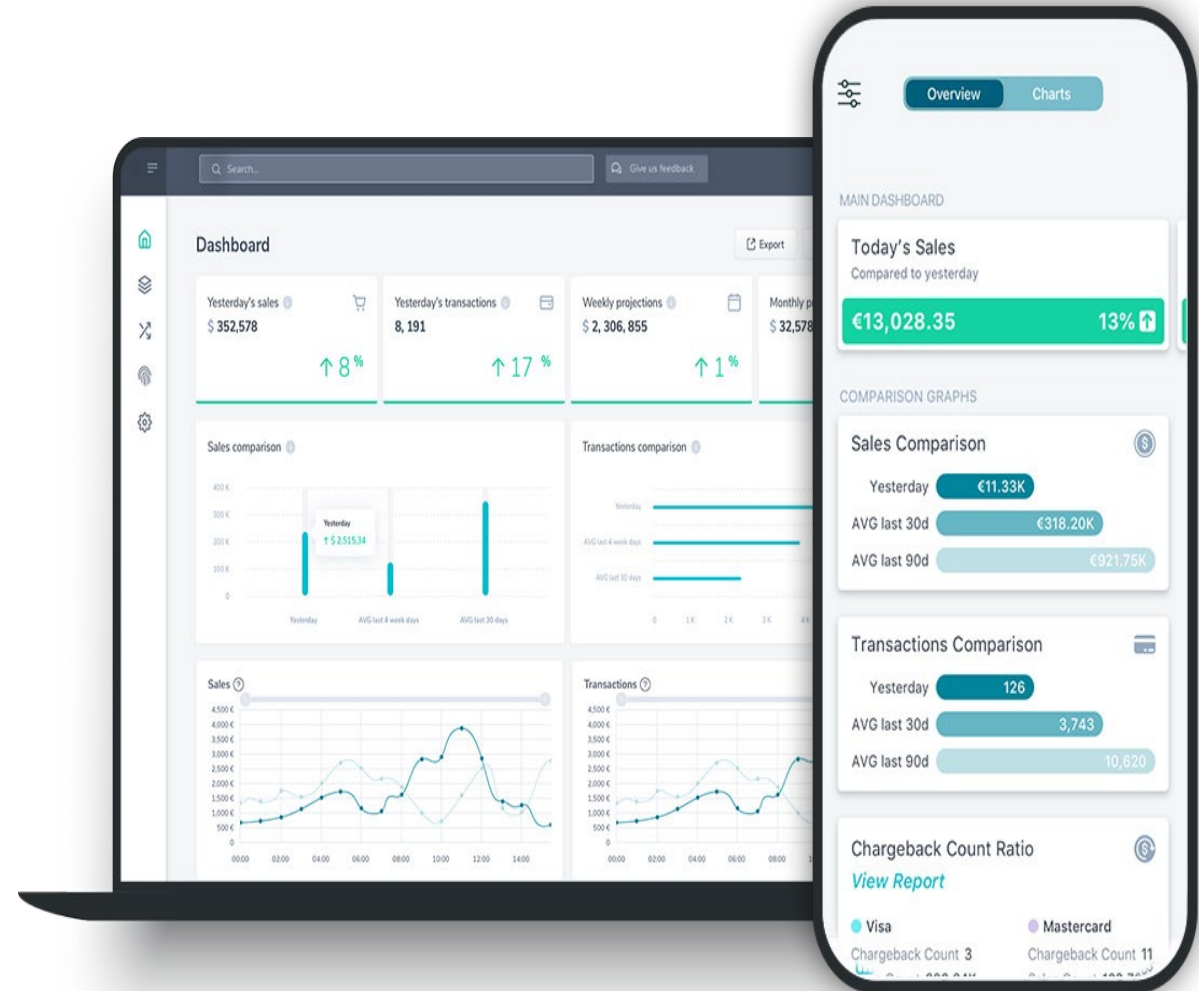
1. Airline chooses BSP Countries for launch and communicates list to UATP
2. Acquiring Partner configures desired BSP Markets
  - 1 business day turnaround time
3. UATP configures desired BSP Markets in parsing engine
  - 15 minutes turnaround time
4. Airline completes IATA LCCB Form, indicates launch date and submits to IATA Portal for processing
  - 3 - 5 business days turnaround time
5. IATA completes processing of LCCB Form and begins sending CSI files to UATP without requirement of reformatting files
6. Airline goes live in BSP Channel
7. Sales visible in cPanel Dashboard same day as transactions are sent for capture to Acquiring partner

# UATP One ARC Activation Checklist

1. Airline informs UATP + Acquiring partner on go-live date for ARC
2. Acquiring Partner configures Airline/ARC pairing in cPanel dashboard
  - 1 business day turnaround time
3. UATP configures ARC / Airline pairing in parsing engine
  - 15 minutes turnaround time
4. Airline communicates with ARC Onboarding Team directly and requests change of processor to UATP One via email.
  - 3-5 business days turnaround time
  - UATP can provide contact information when needed
5. ARC completes configuration of new Airline / Processor pairing and starts sending ARC CCB Files to UATP's Parsing Engine
6. Airline goes live in ARC Channel
7. Sales visible in cPanel Dashboard same day as transactions are sent for capture to Acquiring partner

# Benefit from Robust Online Reporting Dashboard

- VIEW IMPORTANT ACCOUNT INFORMATION QUICKLY
  - ✓ Control Panel gives you an overview of your most recent account activity right from the dashboard. Get to the most important details quickly and get on with running your business.
  - ✓ Near real-time updates and alerts
- GET CUSTOM REPORTS ON YOUR TERMS
  - ✓ Automatically schedule reports for export to CSV, XLS, PDF, email, or SFTP. Manage multiple users with a single administrator per merchant account and track activity with user reports.
- A MOBILE EXPERIENCE LIKE NO OTHER
  - ✓ It's easier than ever to track your performance on the go with our new mobile app. UATP One gives you what you want to know, when you want it.
- DATA RETENTION
  - ✓ Date ranges searches – 12 months
  - ✓ Transaction Reports – 3 years
  - ✓ General reports – 6 months
  - ✓ Transaction ID search – 180 days
  - ✓ Financial reports – 14 months



# cPanel Reports Available – Indirect Sales

- ✓ Finance Reports
- ✓ Movement (Settlement reports)
- ✓ Balance Acquirer IC + charges
- ✓ Settlement Summary
- ✓ Statements
- ✓ Chargeback and retrievals submission process
- ✓ Fully customizable reporting views
- ✓ Ability to integrate



# Thank you!

---

**UATP<sup>®</sup>**

[www.uatp.com](http://www.uatp.com)